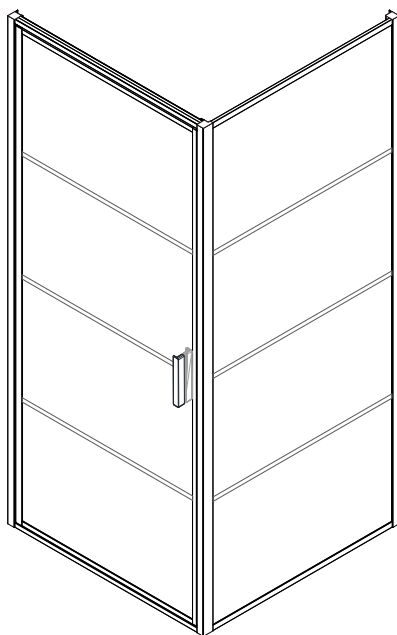


INSTALLATION INSTRUCTIONS

DC01/DC02/DC03

DC04/DC05/DC06



Size: 800x800x2000mm
900x900x2000mm
1000x1000x2000mm



◆ General Information

Please inspect the product immediately upon receipt for transit damage, missing packs/parts or manufacturing fault. Damage reported later cannot be accepted. Please handle the product with care avoiding knocks and shock loading to all sides and edges of the glass.

Notes: Safety glass can not be re-worked.

Please read these instructions carefully before start of installation.

Special care should be taken when drilling walls to avoid hidden pipes or electrical cables.

Note: This product is heavy and may require two people to install.

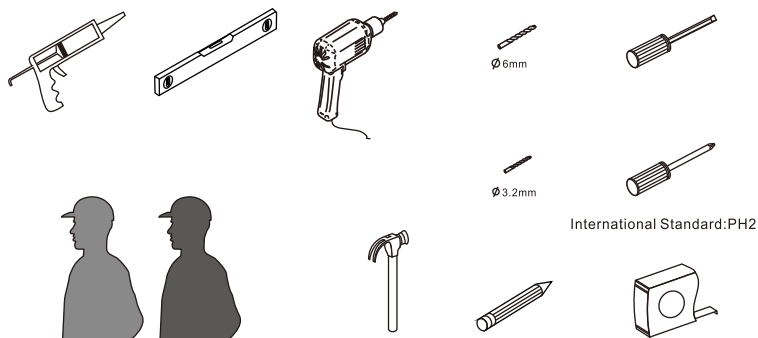
Aftercare instructions

After use, your shower should be cleaned with soap and water. This is particularly important in hard water districts where insoluble lime salts may be deposited and allowed to build up. Cleaners of a gritty or abrasive nature should not be used. Care should be taken to avoid contact with strong chemicals such as organic solvents and strippers.

Glass cleaners can be used but with caution, if in doubt contact the manufacturer of the cleaner in question.

Please keep these instructions for aftercare and customer service details.







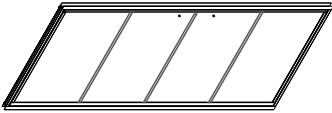

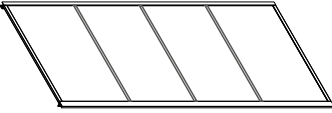
Tools Required



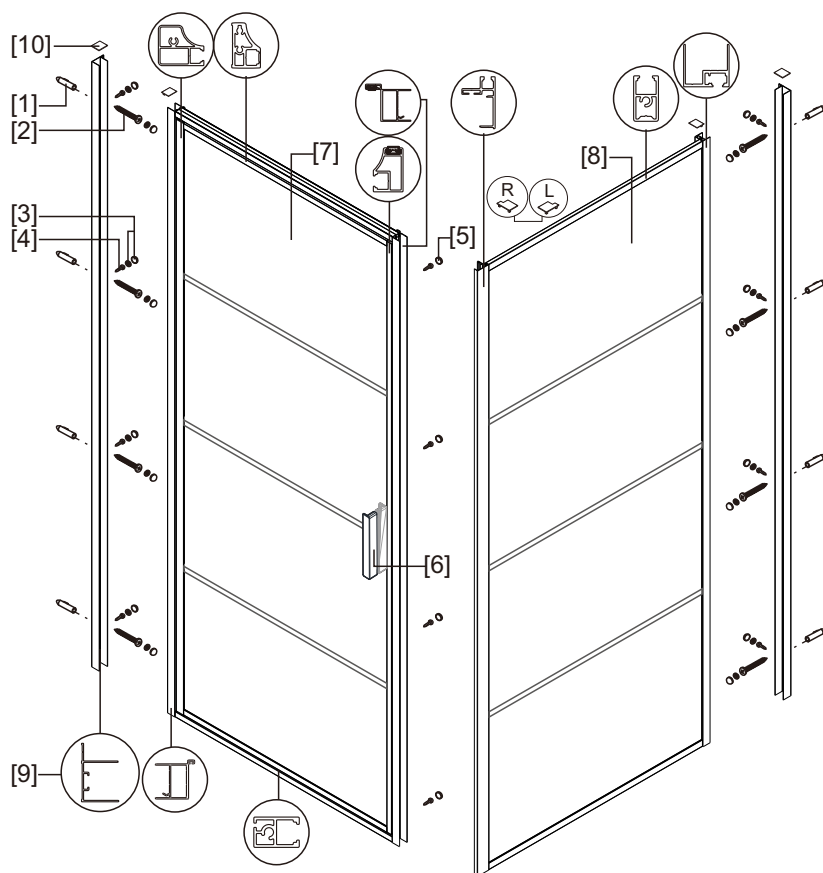
This product is heavy and may require two people to install.



◆ Box Contents:

[1] 1xInstallation Instruction	➔	
[2] 8xWall Plugs 8xScrews M4x35 8xScrew Cover Caps	➔	
[3] 8xScrews M4x8 8xScrew Cover Caps	➔	
[4] 1xHandle Set	➔	
[5] 2xWall Profile	➔	
[6] 5xProfile Covers	➔	
[7] 1xDoor Panel	➔	
[8] 4xScrews M4x8 4xScrew Cover Caps	➔	
[9] 1xSide Panle	➔	

◆ Assembly Drawing

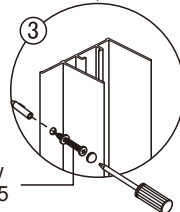
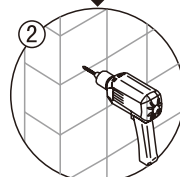
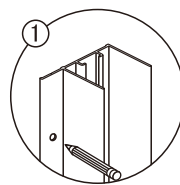
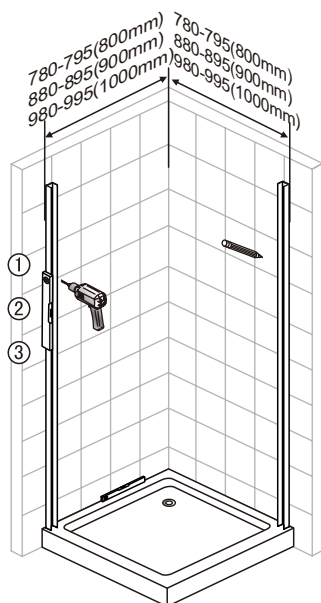


- [1] 8xWall Plugs
- [2] 8xScrews M4x35
- [3] 16xScrew Cover Caps
- [4] 8xScrews M4x8
- [5] 4xScrew Cover Caps

- [6] 1xHandle Set
- [7] 1xDoor Panel
- [8] 1xSide Panel
- [9] 2xWall Profile
- [10] 5xProfile Covers

◆ Installation Steps:

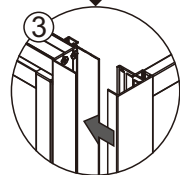
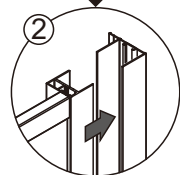
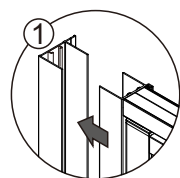
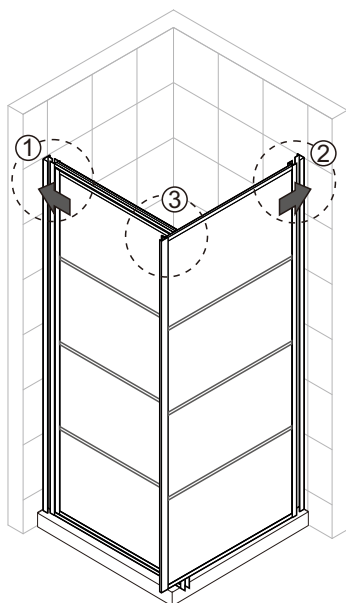
Step 1



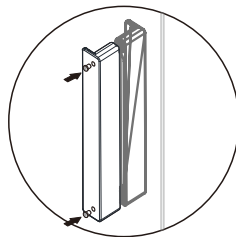
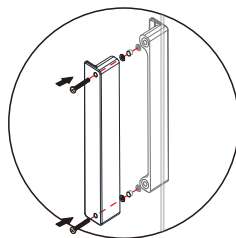
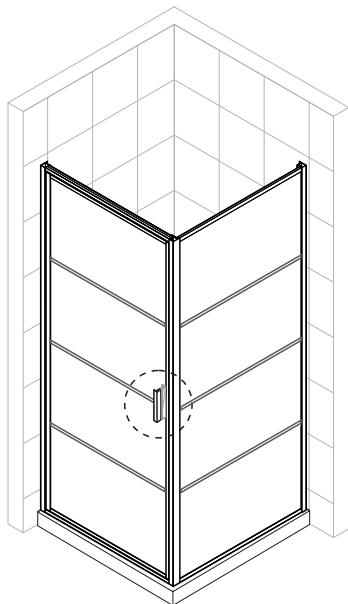
Screw
M4x35

View from inside

Step 2

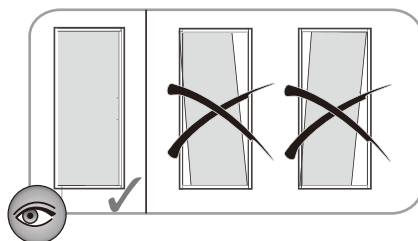
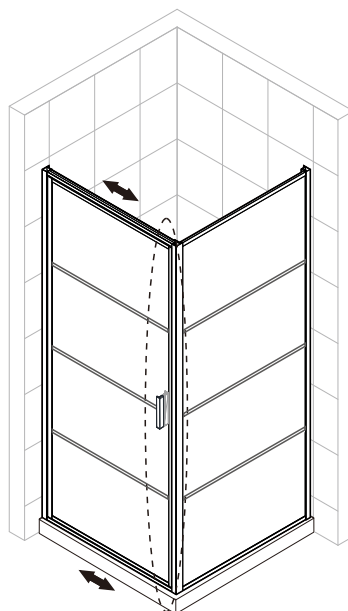


Step 3

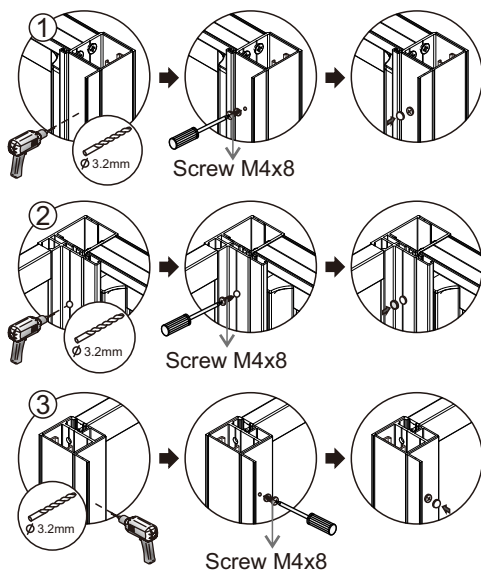
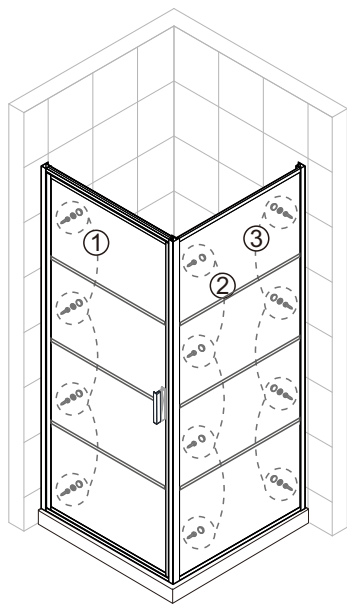


View from inside

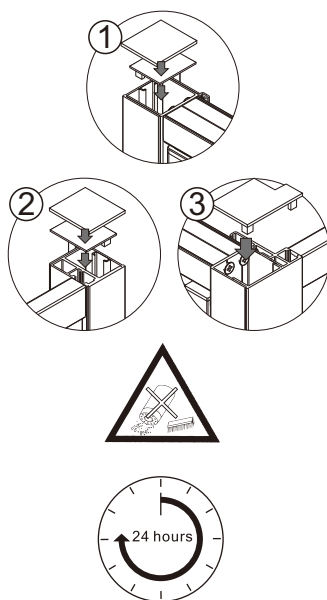
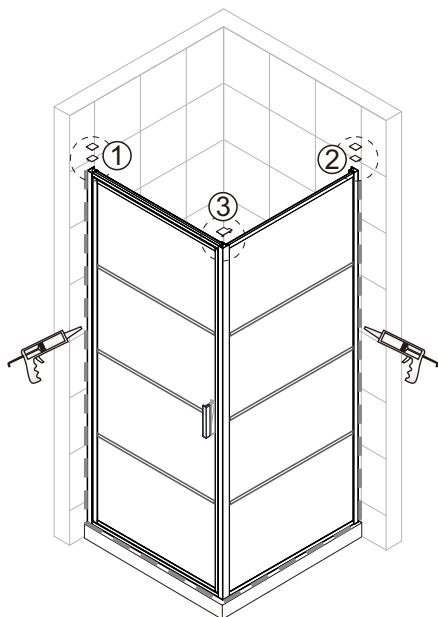
Step 4



Step 5



Step 6



Allow 24 hours for silicone to dry before use.

