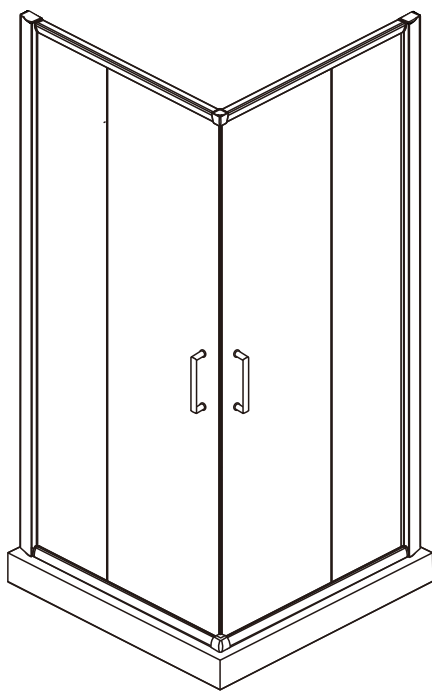


# **INSTALLATION INSTRUCTIONS**

## **DC07/DC08/DC09**



Size: 800x800x1900mm  
900x900x1900mm  
1000x1000x1900mm



## ◆ General Information

Please inspect the product immediately upon receipt for transit damage, missing packs/parts or manufacturing fault. Damage reported later cannot be accepted. Please handle the product with care avoiding knocks and shock loading to all sides and edges of the glass.

### **Notes: Safety glass can not be re-worked.**

Please read these instructions carefully before start of installation.

Special care should be taken when drilling walls to avoid hidden pipes or electrical cables.

Note: This product is heavy and may require two people to install.

## **Aftercare instructions**

After use, your shower should be cleaned with soap and water. This is particularly important in hard water districts where insoluble lime salts may be deposited and allowed to build up.

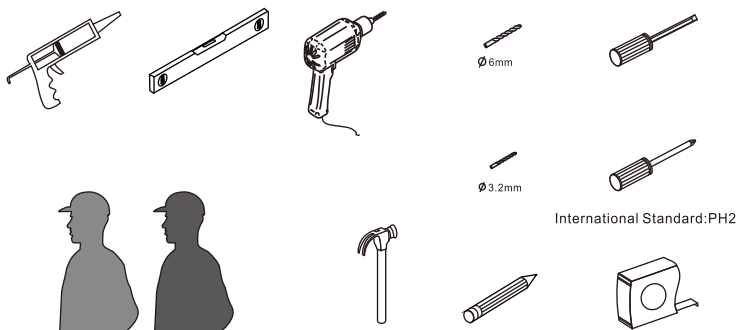
Cleaners of a gritty or abrasive nature should not be used. Care should be taken to avoid contact with strong chemicals such as organic solvents and strippers.

Glass cleaners can be used but with caution, if in doubt contact the manufacturer of the cleaner in question.

Please keep these instructions for aftercare and customer service details.

---

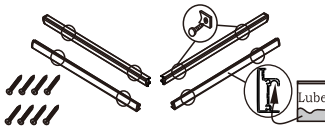





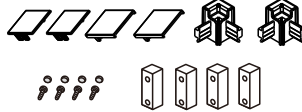



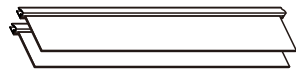
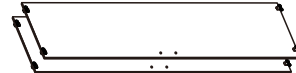
## **Tools Required**



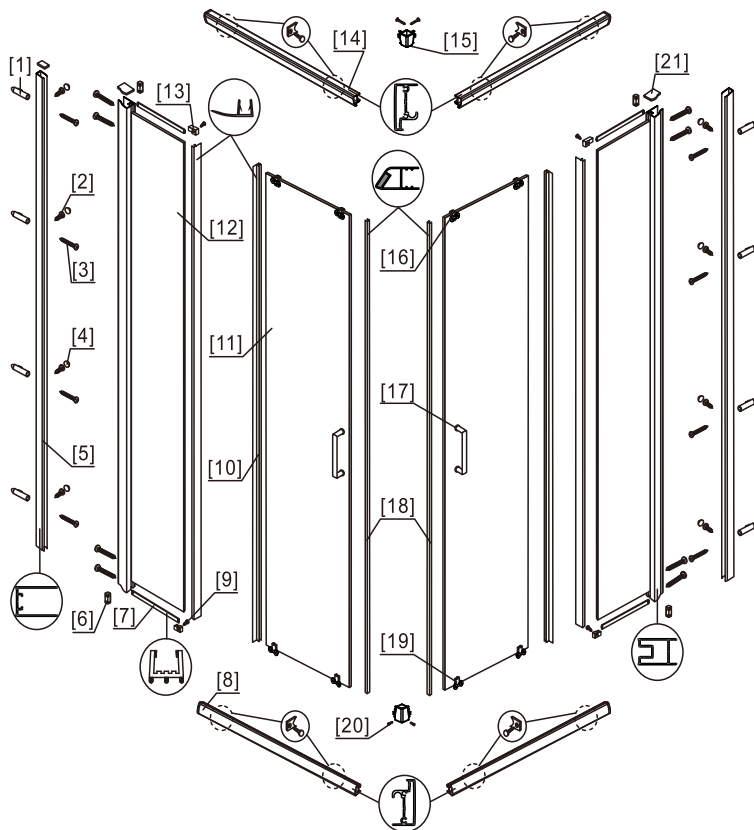
**This product is heavy and may require two people to install.**



# ◆ Box Contents:

<p>[1] 2xTop Horizontal Rails. 2xBottom Horizontal Rails. 4xScrews M4x35. 1xLube.</p>	➔	
<p>[2] 1xInstallation Instruction.</p>	➔	
<p>[3] 2xHandle Sets.</p>	➔	
<p>[4] 4xScrews M4x12. 4xBumpers.</p>	➔	
<p>[5] 8xWall Plugs. 8xScrews M4x35.</p>	➔	
<p>[6] 8xScrews M4x8. 8xScrew Cover Caps.</p>	➔	
<p>[7] 4xProfile Covers. 2xCorer Connectors. 4xScrews M4x14.</p>	➔	
<p>[8] 2xMagnetic Seals.</p>	➔	
<p>[9] 4xWater Deflectors. 4x'U' Deflectors.</p>	➔	
<p>[10] 2xWall Posts.</p>	➔	
<p>[11] 2xFixed Panels.</p>	➔	
<p>[12] 2xDoor Panels.</p>	➔	

## ◆ Assembly Drawing

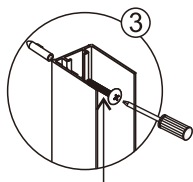
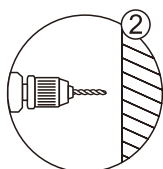
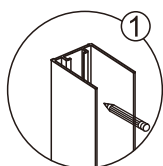


- [1] 8xWall Plugs.
- [2] 8xScrews M4x8.
- [3] 12xScrews M4x35.
- [4] 12 xScrew Cover Caps.
- [5] 2xWall Posts.
- [6] 4xBumpers.
- [7] 4x 'U' Deflectors.
- [8] 2xBottom Horizontal Rails.
- [9] 4xScrews M4x12.
- [10] 4xWater Deflectors.
- [11] 2xDoor Panels.

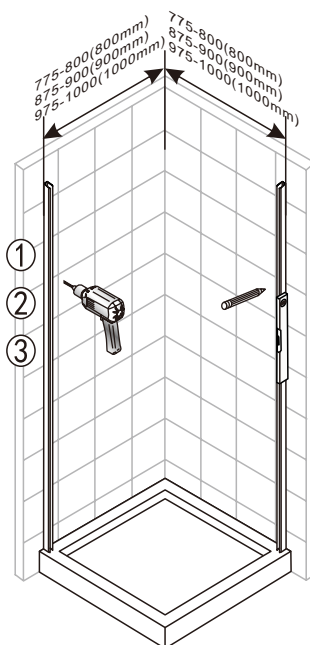
- [12] 2xFixed Panels.
- [13] 4xBumpers.
- [14] 2xTop Horizontal Rails.
- [15] 2xCorer Connectors.
- [16] 4xTop Rollers.
- [17] 2xHandle Sets.
- [18] 2xMagnetic Seals.
- [19] 4xBottom Rollers.
- [20] 4xScrews M4x10.
- [21] 4xProfile Covers.

## ◆ Installation Steps:

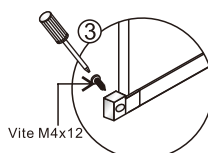
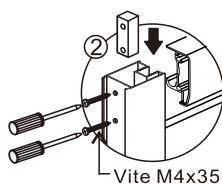
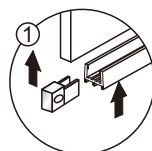
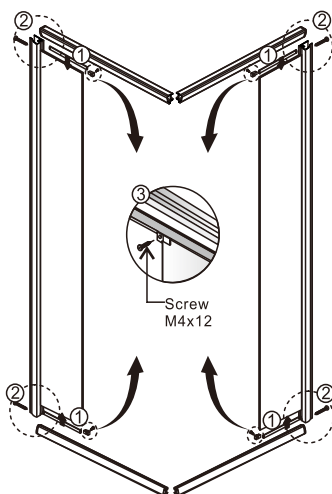
### Step 1



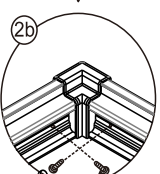
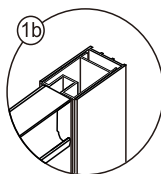
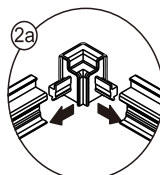
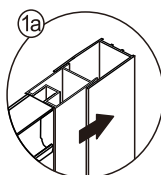
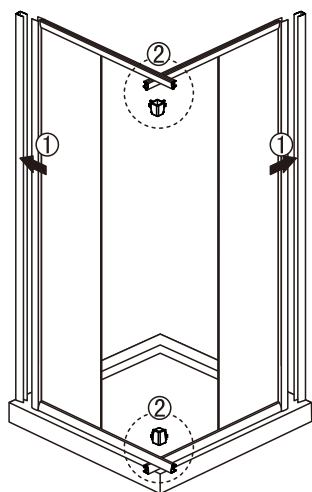
Screw M4x35



### Step 2



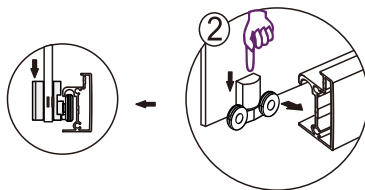
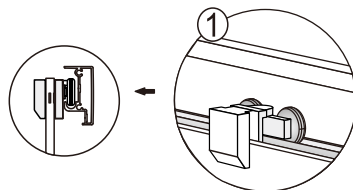
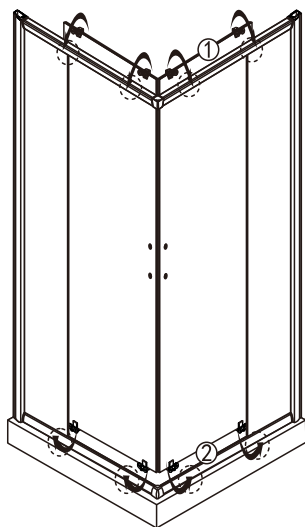
### Step 3



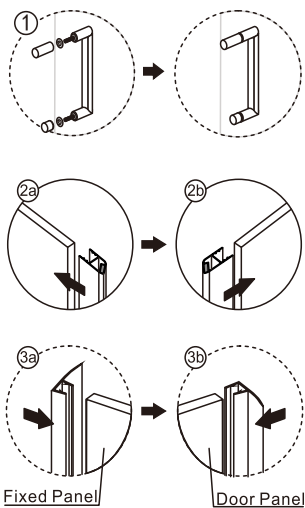
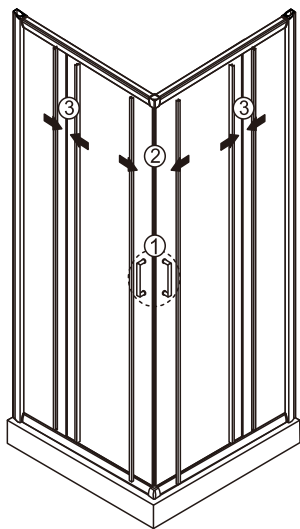
View from inside

Screw  
M4x10

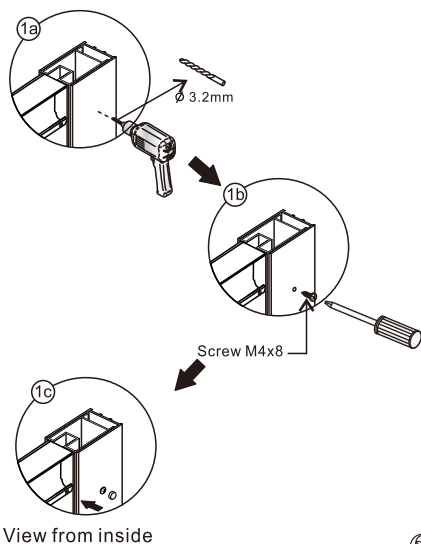
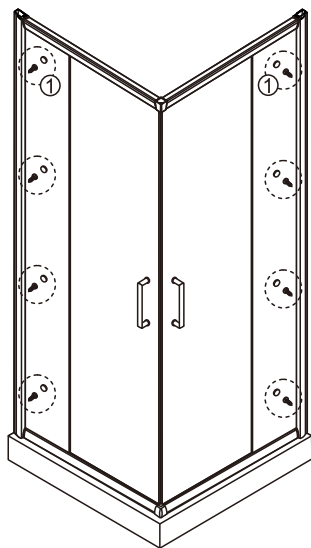
### Step 4



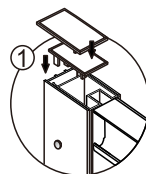
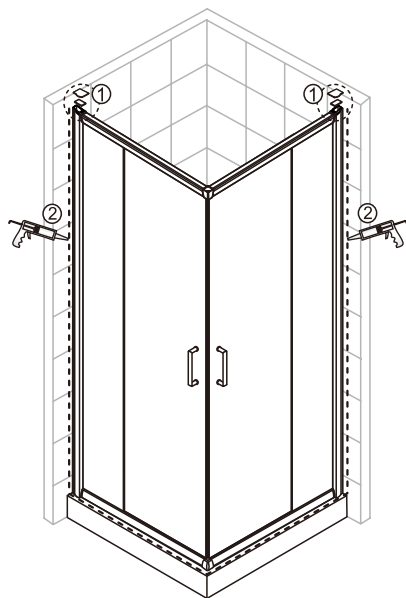
Step 5



Step 6



Step 7



View from inside



Allow 24 hours for silicone to dry before use.